

1523 Laperrriere Avenue

Known By The Company We Keep.®



Building Profile

1523 LAPERRIERE The property is situated on the North side of Laperriere Avenue in the Woodward / Laperriere Industrial area of the City of Ottawa. The site backs onto the Queensway offering access at both the Kirkwood and the Maitland interchanges and is served by OC Transpo. Industrial/ Office use permitted.

Building Physical Properties

Total rentable area: 38,734 sq. ft.

Parking

ON SITE PARKING

Ample on-site exterior parking.

Loading

LOADING:

Dock and Grade Level loading.

Electrical Systems

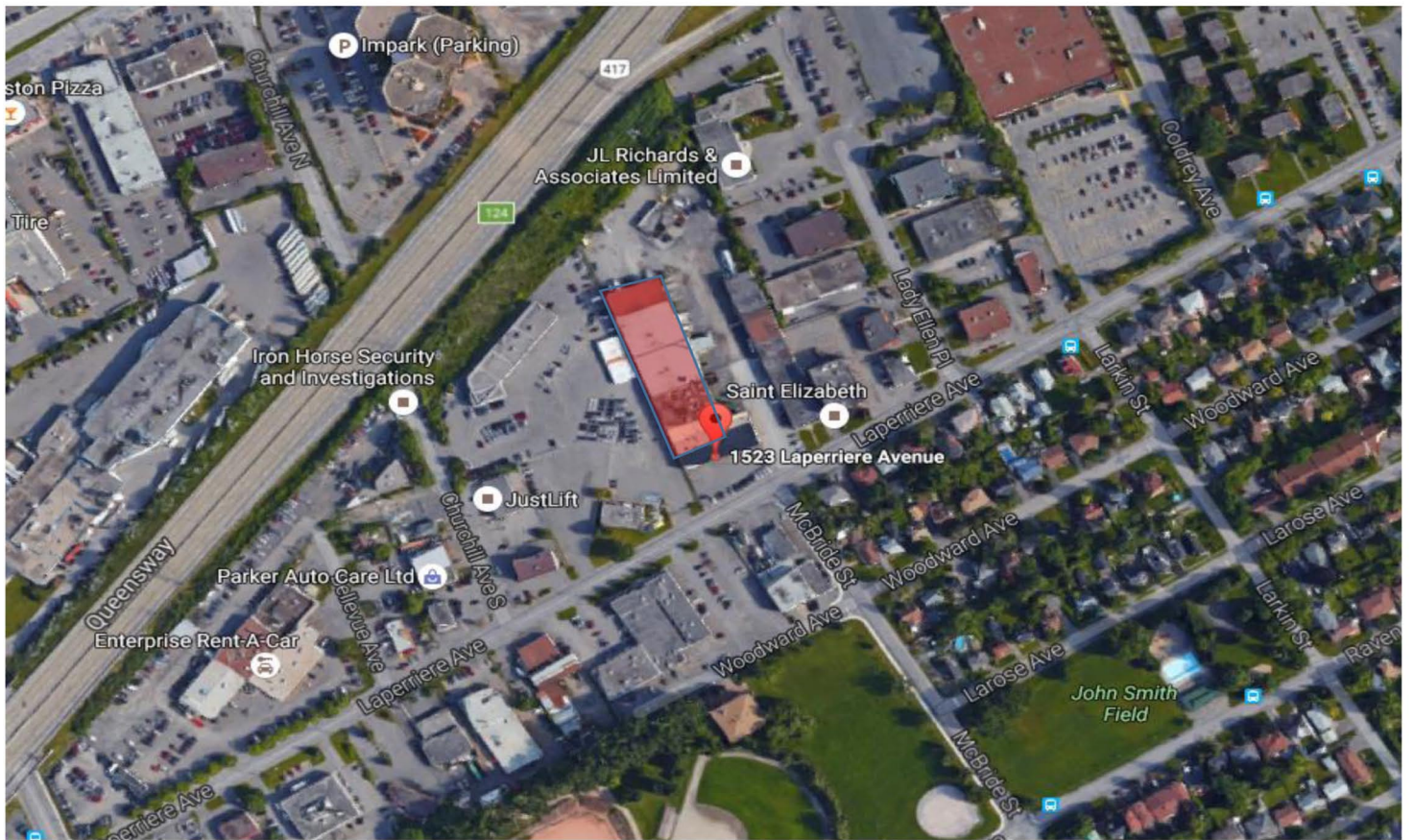
HEATING

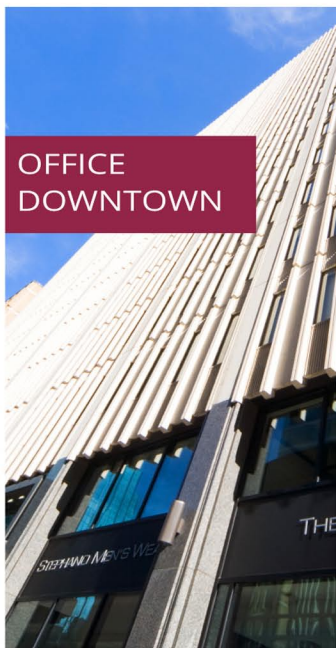
Gas fired steam boiler. Ceiling mounted steam unit heaters throughout the space.

ELECTRICAL SYSTEMS

Originally designed for a manufacturing facility, 4kv supply. Ample power for most uses.



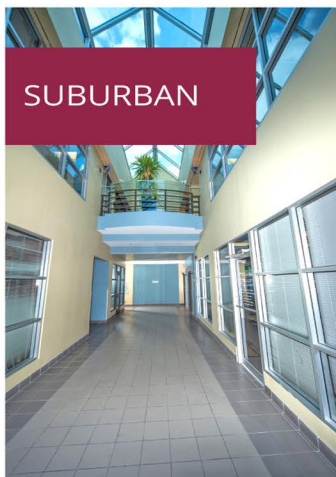




OFFICE
DOWNTOWN



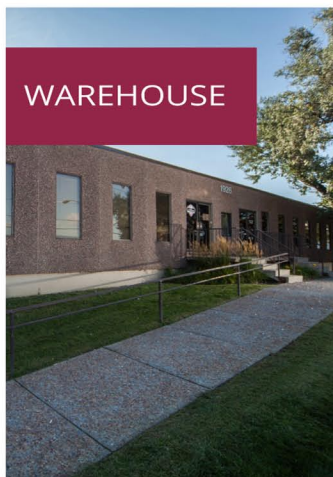
RETAIL
SPACE



SUBURBAN



MEDICAL



OFFICE
CENTRETOWN



SINCE 1949.