



METCALFE
REALTY COMPANY LIMITED

116 ALBERT STREET

RETAIL



116 Albert occupies a coveted site on the corner of two of Ottawa's busiest arteries, Metcalfe and Albert Street. It is a prominent location in the heart of Ottawa's financial and banking area and just a few blocks south of Parliament Hill. This distinctive address offers critical access to Ottawa's many business opportunities.

DOWNTOWN.

GROUND FLOOR.

RETAIL.

FOLLOW US





METCALFE
REALTY COMPANY LIMITED

116 ALBERT STREET

RETAIL

Central business district

-

Additional Rent: \$16.34

-

Net Rent: Negotiable

-

Underground Parking

-

10ft. ceilings

-

On transit way

-

Private elevator and vault

-

3,911 square feet

-

Private street access

-

Signage opportunities

-

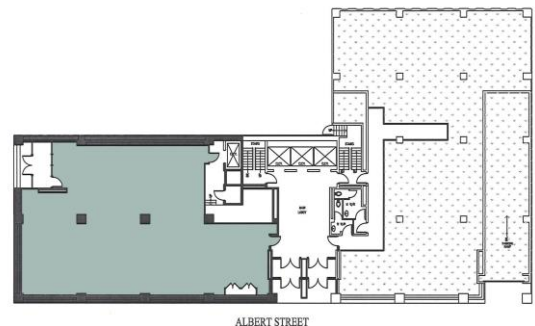
Barrier free access

-

On-site property management

-

High visibility location: 28,409
pedestrians/vehicles daily.



Mike Shore, RPA

Director of Leasing

mshore@metcalfe Realty.com

Jen Arbuckle

Broker

jarbuckle@metviewrealty.com

